



MASONRY FREE WALL

DESIGN OF MASONRY FREE-STANDING WALLS
DESIGN | M03

Summary

Masonry Free Wall can be used to verify the lateral load resistance of wall panels away from wall ends.

What makes this module special?

- 3D representation of the wall section
- Detailed calculation output

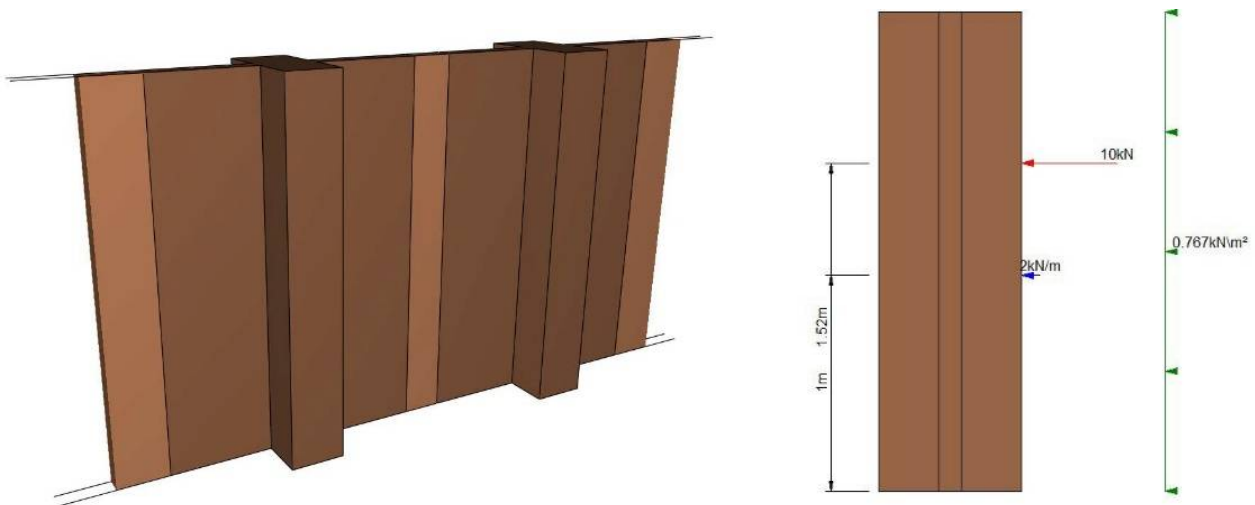
Detailed Description

Masonry Free Wall is used to evaluate masonry walls subject to out-of-plane loads. This module is a standalone program, i.e., it does not post-process results from any of the other analysis modules.

The following wall types are supported:

- Solid
- Solid with piers on one side
- Solid with piers on both sides
- Staggered

Along with multiple load combinations of UDLs, line loads and point loads.

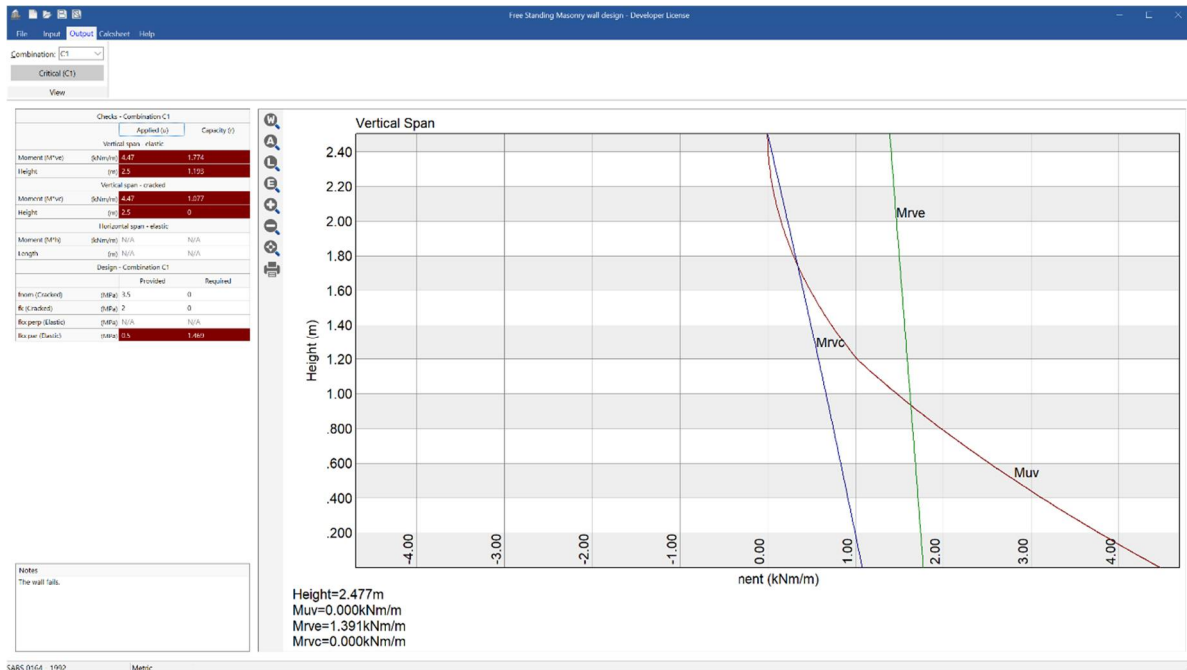




MASONRY FREE WALL

DESIGN OF MASONRY FREE-STANDING WALLS
DESIGN | M03

The design output provides a tabular and diagrammatic summary of the design.



Supported Design Codes

Design Codes

- BS 5628 - 2005
- SABS 0164 - 1992