



CLEAT

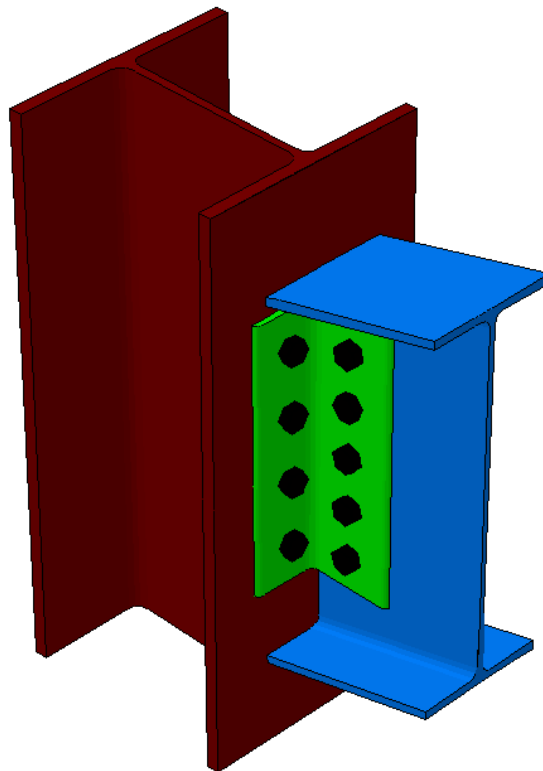
Double ANGLE CLEAT SHEAR CONNECTION
DESIGN | DETAILING | S17

Summary

Cleat designs the connection between a beam and a column when axial and shear force is present without bending. The module uses double angle web cleats to transfer forces between beam and column.

What makes this module special?

- Automatic bolt sizing and spacing
- Design a connection about the column's strong and weak axes
- View connection from several angles
- Detailed calculations





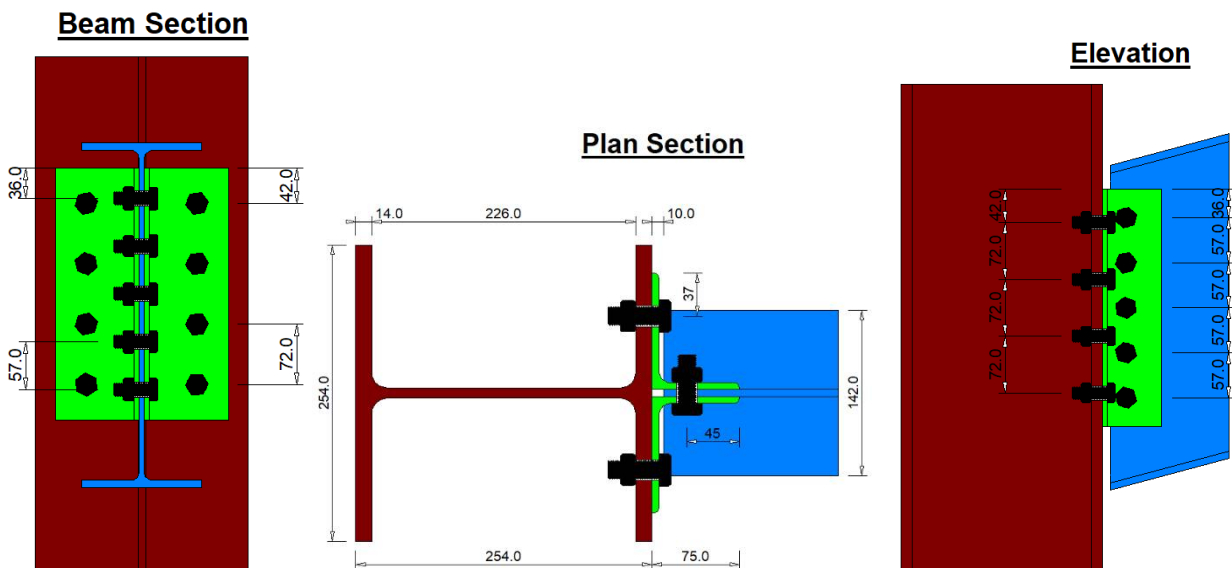
Detailed Description

Cleat can analyse connections that transmit shear and axial force. The designed connections are considered simple connections that have negligible resistance to rotation and is thus incapable of transmitting significant moments at ultimate limit state.

The module make the following assumptions:

- The centre line of the beam and column are in the same plane
- The connection transmits end shear only
- Bolts have normal clearance holes
- All bolts have threads in their shear planes

The module supports I or H-sections and the column can be orientated about its strong and weak design axes. The layout of the bolts on the connecting member is defined by entering their number and spacing. The module provides automatic bolt sizing and spacing options to quickly get a workable bolt layout. To verify that you have defined the connection geometry as you intended, the module lets you view it from several angles either using dimensioned elevations or the 3D view.



After the analysis you can view the design output on a Calcsheet with the complete design calculations.



CLEAT

Double ANGLE CLEAT SHEAR CONNECTION
DESIGN | DETAILING | **S17**

Supported Codes

Design Codes

- AISC 360-16 LRFD
- AS 4100: 2020
- BS5950 – 1990
- BS5950 – 2000
- CAN/CSA – S16.1-94
- Eurocode 3 – 2005
- SABS 0162 -1984
- SABS 0162 - 1993